

SA Climate Ready
COMMUNITY
Action Fund

2024-2025 PROGRAM STATUS UPDATE



**RESILIENCE &
SUSTAINABILITY**

Table of Contents

| | |
|--|----|
| SA Climate Ready Plan | 3 |
| | |
| Resiliency Energy Efficiency and Sustainability Fund | 4 |
| | |
| Community Action Fund | 5 |
| | |
| Impact Tracking Grant funding Implementation/Completion status | 6 |
| | |
| Biodiversity & Healthy Ecosystem Projects | 7 |
| | |
| Building Energy Projects | 8 |
| | |
| Project Status: Climate Resilience & Community Adaptation Transportation Circular Economy | 10 |
| | |
| Project Appendix | 11 |



CLIMATE ACTION AND ADAPTATION PLAN (CAAP)

SA Climate Ready is a climate action and resilience plan that lays a roadmap for protecting everything we love about San Antonio. It provides an honest assessment of our current greenhouse gas projections and highlights the places where our city is most vulnerable to impacts like drought, heatwaves, and displacement. It also outlines some high-impact strategies the city could take to reduce our greenhouse gas emissions and safeguard our communities from climate impacts in the future.

The SA Climate Ready Plan serves as a roadmap to strengthen our community's quality of life and resilience, while thoughtfully managing the projected growth of 1.1 million people by 2040. The plan aims to balance this growth with the need to protect our economic, environmental, and social resources.

The actions of SA Climate Ready span both climate change mitigation (reducing our emissions) as well as climate change adaptation (adjusting to the changes we're seeing).

The CAAP is the City's roadmap to achieve carbon neutrality and address future climate change impacts.

2017

City Council set a goal to become carbon neutral by 2050 and to adapt to climate impacts.

through

2019

City Council approved the Climate Action and Adaptation Plan (CAAP)

Resilience Energy Efficiency and Sustainability Fund

The City Council established the Resiliency, Energy Efficiency, and Sustainability (REES) Fund to provide resources to support the implementation of the SA Climate Ready Climate Action and Adaptation Plan (CAAP). \$2.5 million dollars was allotted to provide local businesses, neighborhood and community organizations funds to pursue sustainable initiatives under one of these five categories:



Reduce Building Energy Consumption

Reducing the energy consumption of our buildings will reduce the need for energy generated by high carbon sources. This strategy goes hand-in-hand with transitioning to carbon-free energy.



Promote Biodiversity & Healthy Ecosystems

Healthy, properly functioning natural ecosystems can absorb emissions. In addition to protecting and preserving existing natural ecosystems, these strategies promote the development of solutions to mimic natural responses.



Reduce Transportation Energy Consumption

More than one-third of San Antonio's greenhouse gas (GHG) emissions come from our transportation systems. To reduce GHG emissions from our transportation system, San Antonio will need to design smart initiatives, including promotion of cleaner vehicles and reducing vehicle miles traveled, to transform how we develop our communities and how people get around.



Increase Climate Resilience and Community Adaptation

Not all community members are contributing equally to climate change, and not all community members have the same resources or capabilities to protect themselves from its negative effects. When planning for climate change it is important to prioritize the communities who are most impacted. We do this by actively seeking, including, and prioritizing direction from these communities, prioritizing benefits to these communities, and reducing existing burdens to these communities.



Advance the Circular Economy

The waste that goes to the landfill today continues to release GHG emissions for decades as it breaks down. In recognition of these emissions, San Antonio has identified measures that reduce consumption, minimize waste, and encourage material reuse. Together these strategies will work to reduce the GHGs emitted by the waste stream and landfills.

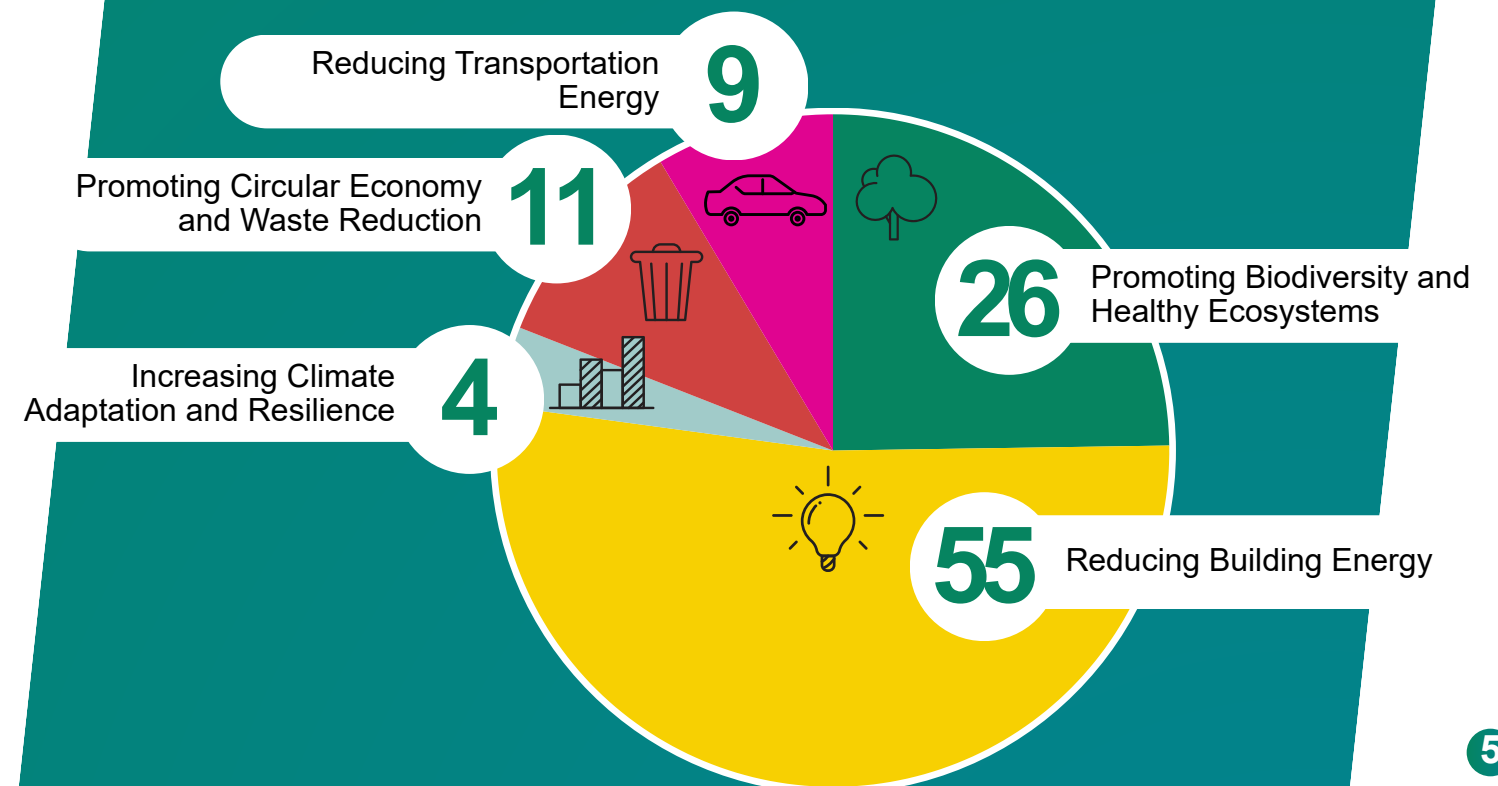
Community Action Fund



The SA Climate Ready Community Action Fund Business and Neighborhood & Community Grants Program inspired projects that enhanced community sustainability efforts and fostered resilience that create a more sustainable and resilient San Antonio.

Successful projects further the SA Climate Ready Climate Action and Adaptation Plan (CAAP) goals, reduce building and/or transportation energy consumption, leverage local and federal funding, create community partnerships, and/or meaningfully involve underserved communities, diverse groups, or vulnerable populations. The Business and Neighborhood & Community Grants helped launch or advance existing community sustainability projects. Local businesses and community-based organizations whose projects were within San Antonio city limits were eligible for awards up to \$20,000.

The 106 funded projects supported the SA Climate Ready Plan by advancing:



Impact Overview

Total \$ awarded for all projects **\$1,990,791.98**

Neighborhood and Community Projects

\$911,403.58
Total \$ awarded

51 Total Projects

Business Projects

\$1,079,388.40
Total \$ awarded

55 Total Projects

Project Status

Implementation projects progressed through four key phases listed below. Throughout this report, you will find the percentage indicating each project's current phase.

25% Planning

Waiting to receive funding and gathering needed material

50% Procurement

Ordered needed material and waiting for delivery

75% Implementation

Project materials being activated/installed/presented

100% Completion

Project has been completed

AME Church Millions Gardens project planted 5 new community gardens across AME churches in San Antonio



PROJECT OVERVIEW

Promote Biodiversity and Healthy Ecosystems



Cherub's Tattoo Native Landscaping to mitigate flooding and increase cooling effects



TRACKING METRICS

Gardens Planted **19**

People Reached **300**

| Biodiversity & Healthy Ecosystem Projects | Phase |
|---|-------|
| AME Churches | 100% |
| Armadillo Gardens | 100% |
| Cherubs Tattoo's | 100% |
| Coral Studio | 100% |
| Democracy Prep Public Schools | 100% |
| Form Communities | 100% |
| Friends of Bonham | 100% |
| Grace Northridge | 100% |
| MacArthur Park Lutheran Church | 100% |
| Monumental Farms and Nursery | 100% |
| Seasonal Farm Salads | 100% |
| Terra Advocati | 100% |
| Texas A&M ICSP | 100% |
| Washington Elementary | 100% |
| SA Life Academy | 100% |
| Young Women's Leadership Academy | 100% |
| Food Bank | 75% |
| Frank Madla Elementary | 75% |
| Friends of Roosevelt Park | 75% |
| Headwaters at Incarnate Word | 75% |
| Nourish'd Seeds | 75% |
| UIW Project | 50% |
| Bexar Branches | 50% |
| Ensemble Texas | 50% |
| McAllister Park | 50% |
| Tamõx Talõm Food Forest | 50% |



TRACKING METRICS

Building Energy Efficiency projects are being measured through energy consumption and costs.*

Projects from Jan-24 to Jun-24

Energy Consumption

943,520.55 kWh

Energy Cost (\$)

\$117,759.27

Projects from Jan-25 to Jun-25

Energy Consumption

192,808.00 kWh

Energy Cost (\$)

\$26,450.83

Difference

Energy Consumption

-750,712.55 kWh

Energy Cost (\$)

-\$91,308.44

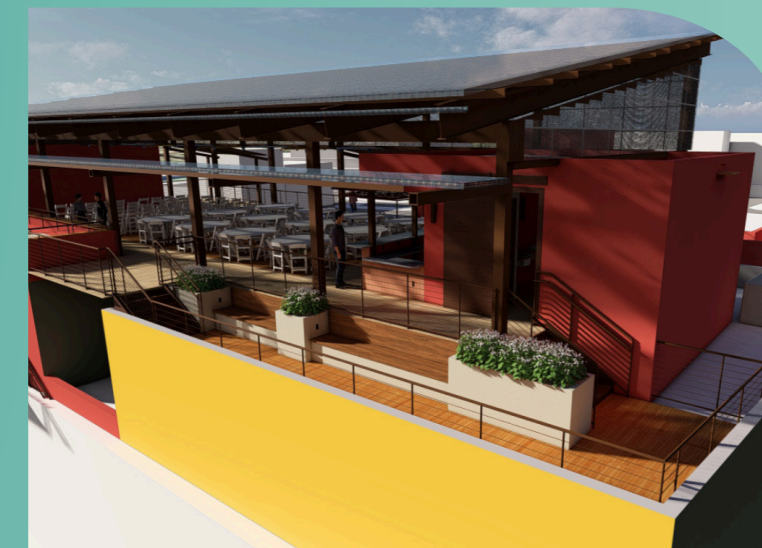
PROJECT OVERVIEW

Reduce Energy Building Consumptions

| Energy Building Consumption Projects | Phase |
|--------------------------------------|-------|
| BLCCS Haven for Home | 100% |
| DoSeum | 100% |
| Dress for Success | 100% |
| Earbender Studios | 100% |
| El Templo Cristiano | 100% |
| Fat Tummy Empanadas | 100% |
| Genesis 1:3 | 100% |
| Hallmark University | 100% |
| Haven for Hope | 100% |
| La Estrella Adult Daycare | 100% |
| LED Authority | 100% |
| Maestro Center | 100% |
| Maria's Cafe | 100% |
| Merced | 100% |
| New Life Christian Center | 100% |
| Paper Street Studio | 100% |
| Parallel | 100% |
| RCG Wurzbach Med Center | 100% |
| Sam Houston VFW Post 76 | 100% |
| San Antonio Alliance | 100% |
| Studio 8118 | 100% |



Sa Alliance for Teachers mini split installation



Artpace solar rooftop designed by GrassoGay Architectures

| Energy Building Consumption Projects | Phase | Energy Building Consumption Projects | Phase |
|--------------------------------------|-------|--------------------------------------|-------|
| Texas Universal Lighting | 100% | KLRN | 50% |
| Valencia Homeowner's Association | 100% | Mosaic Church | 50% |
| Woodlawn Lake | 100% | Province of Our Lady of Consolation | 50% |
| Fermenteria | 75% | Quintana | 50% |
| King Williams Association | 75% | SAT Energy/Riposa Vita | 50% |
| Opportunity Home | 75% | St Luke City on a Hill | 50% |
| Pecan Views | 75% | Tandem | 25% |
| Petri's Place | 75% | Trilogy Dance Center | 25% |
| San Antonio Street Art Initiative | 75% | Atomka | 25% |
| Travis Park Church | 75% | Barrio Barista Coffeehouse | 25% |
| Woodeez Woodcraft | 75% | Helmy | 25% |
| Artspace Solar | 50% | Inn on the Riverwalk | 25% |
| Chifladas Community | 50% | Lone Star Truck & Equipment | 25% |
| Emali Lane Salon and Spa | 50% | MP Studio Landscape Architecture | 25% |
| File's Burgers | 50% | Popped Up LL | 25% |
| House of Neighborly Service | 50% | Sawillo's | 25% |
| Jaime's Place | 50% | Park Place Partners | 25% |

*Project progress varies due to energy audits, contractor availability, and procurement of goods

PROJECT OVERVIEW

TRACKING METRICS



Increase Climate Resilience & Community Adaptation

- Climate Construction Events Held **23**
- Solar Powered Tool Library Installed **1**
- Mini Splits Installed **20**

| Climate Resilience & Community Adaptation Projects | Phase |
|--|-------|
| Gardopia Gardens | 100% |
| Girl w Grit | 100% |
| Fuerza Unida and Thompson Neighborhood | 75% |
| Circular San Antonio | 50% |



Gardopia Gardens showcasing Hydropanel installation

PROJECT OVERVIEW

Advance the Circular Economy



TRACKING METRICS

- Ibs Diverted from Landfills **25,197**
- Ibs Diverted from Watershed **149,106.23**
- Tool Library Established **1**



| Circular Economy Projects | Phase |
|--|-------|
| Friends of Spare Parts dba Spare Parts | 100% |
| River Aid San Antonio | 100% |
| San Antonio Composting Project | 100% |
| Famous Juice Company | 75% |
| Power of Preservation | 75% |
| Wicked Voodoo | 75% |
| Wildway LLC | 75% |
| Crepeccino Cafe and Bakery | 50% |
| Developmate | 50% |
| Koasis Media | 50% |
| Mission Compost | 50% |

PROJECT OVERVIEW

Reduce Transportation Energy Consumption



TRACKING METRICS

- Ibs Carbon Emissions Saved **3,107**
- EVs on the Road **2**
- Vehicle Miles Avoided **25,684**
- E-bike Workshops **3**

| Transportation Energy Consumption Projects | Phase |
|--|-------|
| Chak Therapy's Sustainable Future | 100% |
| Ghisallo Golden Rollers | 100% |
| Heat Print Design | 100% |
| San Antonio BCycle | 100% |
| Bronko Bikes | 75% |
| RCG Wurzbach, LLC: Med Center | 75% |
| Sidecars Fleet | 75% |
| The Local (formerly known as SAGO) | 75% |
| Willie Velasquez Institute | 75% |



Bronko Bikes E-bike school presentation

Project Appendix



The SA Climate Ready Community Fund Grant Program helped seed grassroots action and amplify local leadership in climate resilience.

With funding from the REES Fund and support from the Office of Sustainability, these community-driven efforts are shaping a more sustainable, connected San Antonio, one project at a time.

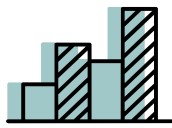
Scan or click the QR code to explore all 105 community and business projects.



RESILIENCE & SUSTAINABILITY

Through innovative programs focusing on **energy efficiency, community and corporate sustainability, and sustainable transportation**, the Office of Sustainability is working to make San Antonio a great place to live, work, and play while enhancing the environment, quality-of-life, and our economic vitality.

Climate equity ensures that these communities play a central role in the just transformation of the systems that have established, and continue to perpetuate, the unequal burden of climate impacts. This means that intentional policies and projects to mitigate or adapt to climate change must:



✓ Actively seek, include, and prioritize direction from these communities.



✓ Prioritize benefits to these communities.



✓ Reduce existing burdens and bar additional burdens to these communities.



For more information about The City of San Antonio's sustainability efforts,

visit the Office of Sustainability website at

SANANTONIO.GOV/SUSTAINABILITY

and the SA Sustainability Dashboard at

SACLIMATEREADY.ORG